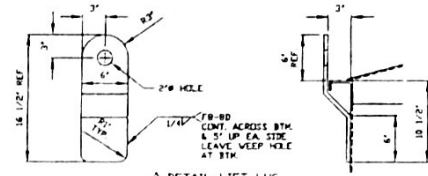


DETAIL ANCHOR CHAIR
 (B) RECD
 MAT'L: 1/2" THK. A240-304
 SCALE: 1 = 12



MATERIALS	
ROOF	3/16" THK. A240-304
SHELL	1/4" THK. A240-304
BOTTOM	3/16" THK. A240-304
FLANGES	A105 GALV. (LD FLOOD) & A182-304
REPAPS	N/A
NOZZLE NECKS (PIPE)	A312-304
NOZZLE NECKS (PLATE)	A240-304
WELD FITTINGS	4403-304
VESSEL SUPPORT	N/A
STRUCTURAL	A240-304
BOLTS	A307 ZINC PLATED
NUTS	A307 ZINC PLATED
GASKETS	1/8" NEOPRENE

DESIGN CONDITIONS	
DESIGN PRESSURE (IN. W.C.)	10 INT / 5 EXT.
AT DESIGN TEMP. (F)	200
OPERATING PRESSURE (IN. W.C.)	ATM
AT OPERATING TEMP. (F)	90
CORROSION ALLOWANCE	NONE
LABEL	MITM (PER API 650 WHERE APPLIC)
STRESS RELIEVE	NONE
RADIURAPH	NONE
JOINT EFF.	70
HYDR. TEST	N/A
AIR TEST	2-3 PSIG
CUSTOMER INSPECTION	YES
MTR COPIES	1 X MITM, 1 CUSTOMER
NAMEPLATE FACSIMILE	YES
SEISMIC & WIND DESIGN	PER API 650

WEIGHTS & CAPACITIES	
EST. CAPACITY, GALS.	
PER FT. STRAIGHT SIDE	846
TOTAL (TD TO TOP ANGLE)	13,958
SP. GR. OF CONTENTS	1.5
EST. WT. OF CONTENTS (LBS)	174,621
EST. WT. OF VESSEL (LBS)	12,000
TOTAL EST. WT. (LBS)	186,621

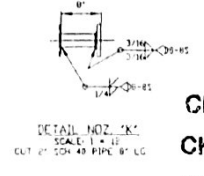
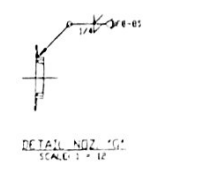
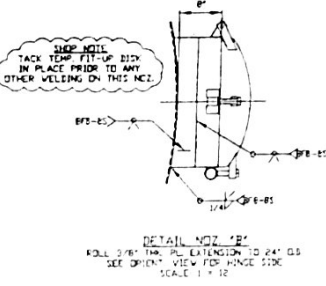
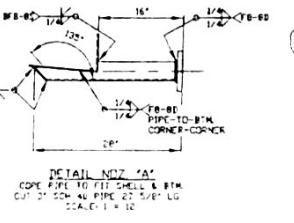
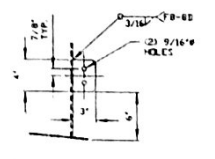
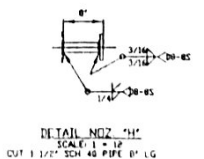
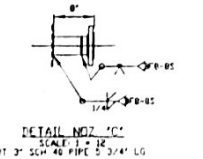
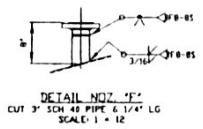
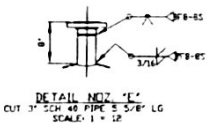
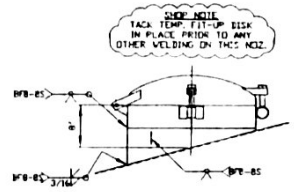
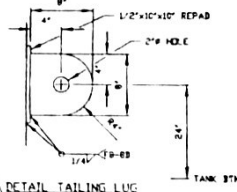
FITTING SCHEDULE			
NO.	QTY	DESCRIPTION	REMARKS
A	1	3"/150# RP30/SCH 40	OUTLET
B	1	2 1/2"/150# RP30/SCH 40	SIDE MANWAY
C	1	3"/150# WJ/SCH 40	OVERFLOW
D	1	2 1/2"/150# WJ/SCH 40	TOP MANWAY
E	1	3"/150# RP30/SCH 40	VENT
F	1	3"/150# WJ/SCH 40	INLET
G	1	3"/150# WJ STUD PAIR	LEVEL
H	1	1 1/2"/150# RP30/SCH 40	TEMPERATURE
K	1	2"/150# RP30/SCH 40	REFRYCLF

- NOTES
- 80# F. HOLES TO STRADDLE LINE PARALLEL TO 67.50° AND 90°/270° CENTERLINES.
 - FABRICATOR SHALL PROVIDE GASKETS, BOLTS AND HEX NUTS FOR ALL MATING PARTS INCLUDING BLIND FLANGES WHERE NOTED.
 - / INDICATES MACHINE FINISHED SURFACE.
 - INSULATION SUPPORTS ARE REQUIRED.
 - FABRICATOR SHALL PROVIDE PROTECTIVE SHIELDS FOR ALL FLANGES AND OPENINGS.
 - SHOP TOLERANCES: DIMENSIONS ± 1/16" NOZZLES ± 1/2 DEGREE
 - SANDBLAST: INTERNAL: NONE (POWDER WASH) EXTERNAL: SS-BLUSH STARBLAST EXTERNAL: SS-SPRO-SPV
 - LINING: NONE
 - PAINT: ONE COAT INTERZING 22 AT 2-3 MILS DFT. (CS ONLY)
 - RADIUS WELDS & EDGES 1/8" MINIMUM

SOLD FILE

REVISIONS	
NO.	DATE BY DESCRIPTION
1	11/08/06 M.M. LURGI PSI / CIEC, INC. CANTON, IL
2	2/26/07 D.P. DLP
3	3/27/06 D.P. DLP
4	3/27/06 R.M.S.
5	3/28/07 M.B.A.

06018
 CIE: ETHANOL
 Canton, Illinois
 04.04.07
 171 75 85 20
 0180012 008



CERTIFIED PRINT CHECK
 CHK. BY: *[Signature]*
 DATE: 9-6-07

